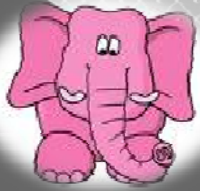




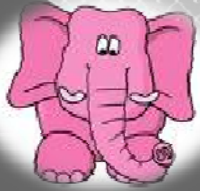
The Elephant in the Room

- ❑ Introduction & Overview
- ❑ Review of Academic Risk Assessment Tool
- ❑ Group Breakout to Review Priority Areas
- ❑ Discussion/Feedback



Introduction & Overview

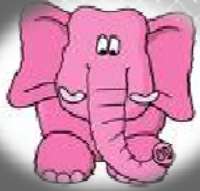
- ❑ What is the Elephant in the Room?
- ❑ Conference Initiative
 - Committee on Infractions Appointment
 - “Ahead of the Curve” on issues related to Academic Fraud
- ❑ Why is this Topic Important?
 - Academic Functions in Major Infraction Cases



Why this is important...

Academic Functions in Major Infractions

- Division-I Major Infraction Cases Related To Division-I Bylaws:
 - “Academic Fraud” – 20.5%, (46/224).
 - “Academic Support” – 8.7%, (18/224).
 - “Book” – 11.2%, (25/224).
 - “Tutor” – 11.2%, (25/224).
 - “Correspondence Course” – 8.0%, (18/224).
 - “Online” – 3.8%, (8/224).



Why this is important...

Academic Functions in Major Infractions

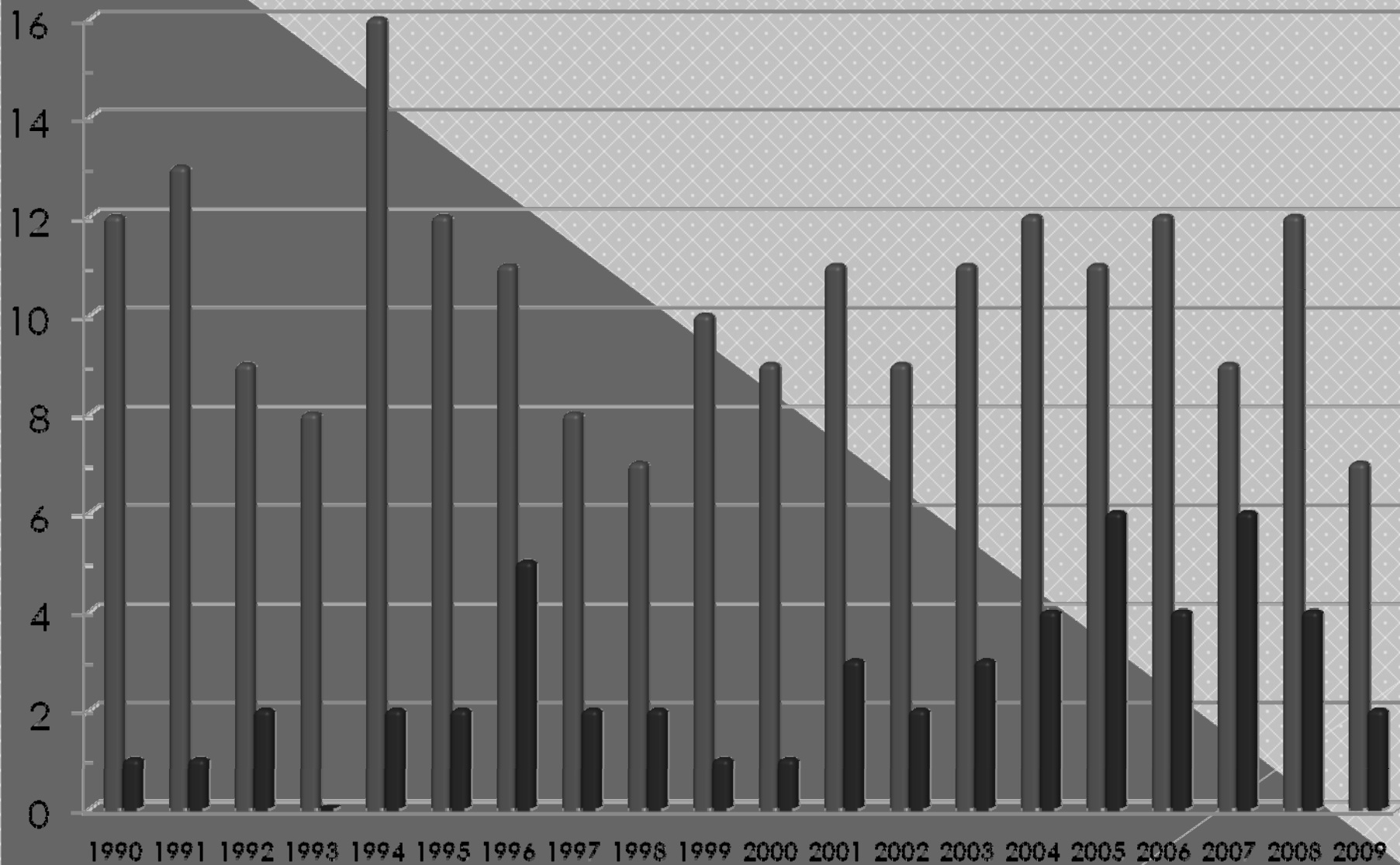
- Division-I Major Infraction Cases Related To Division-I Bylaws:
 - “Academic Advisor” – 12.6%, (28/224).
 - “Proctor” – 7.6%, (17/224).
 - “Mentor” – 3.8%, (8/224).
 - “Grades” – 16.7%, (38/224).
 - “Typing” – 5.4%, (12/224).
 - “Academic Services” – 10.7%, (24/224).



MAJOR INFRACTIONS

Division I Institutions & Division I Bylaws

Historical Tracking/Trending Summary



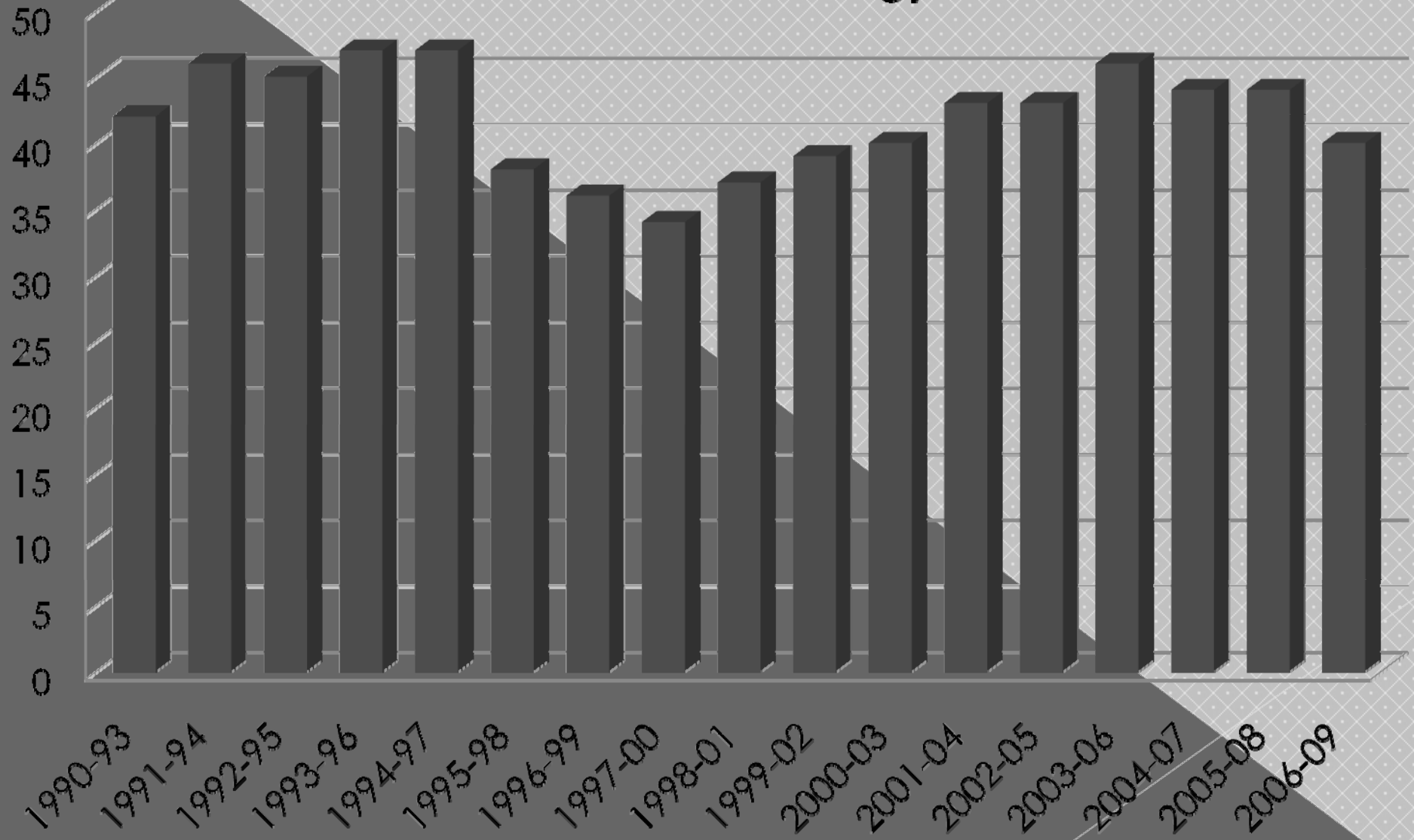
■ All Major Infractions

■ Academically Related Major Infractions

As of 5/2009



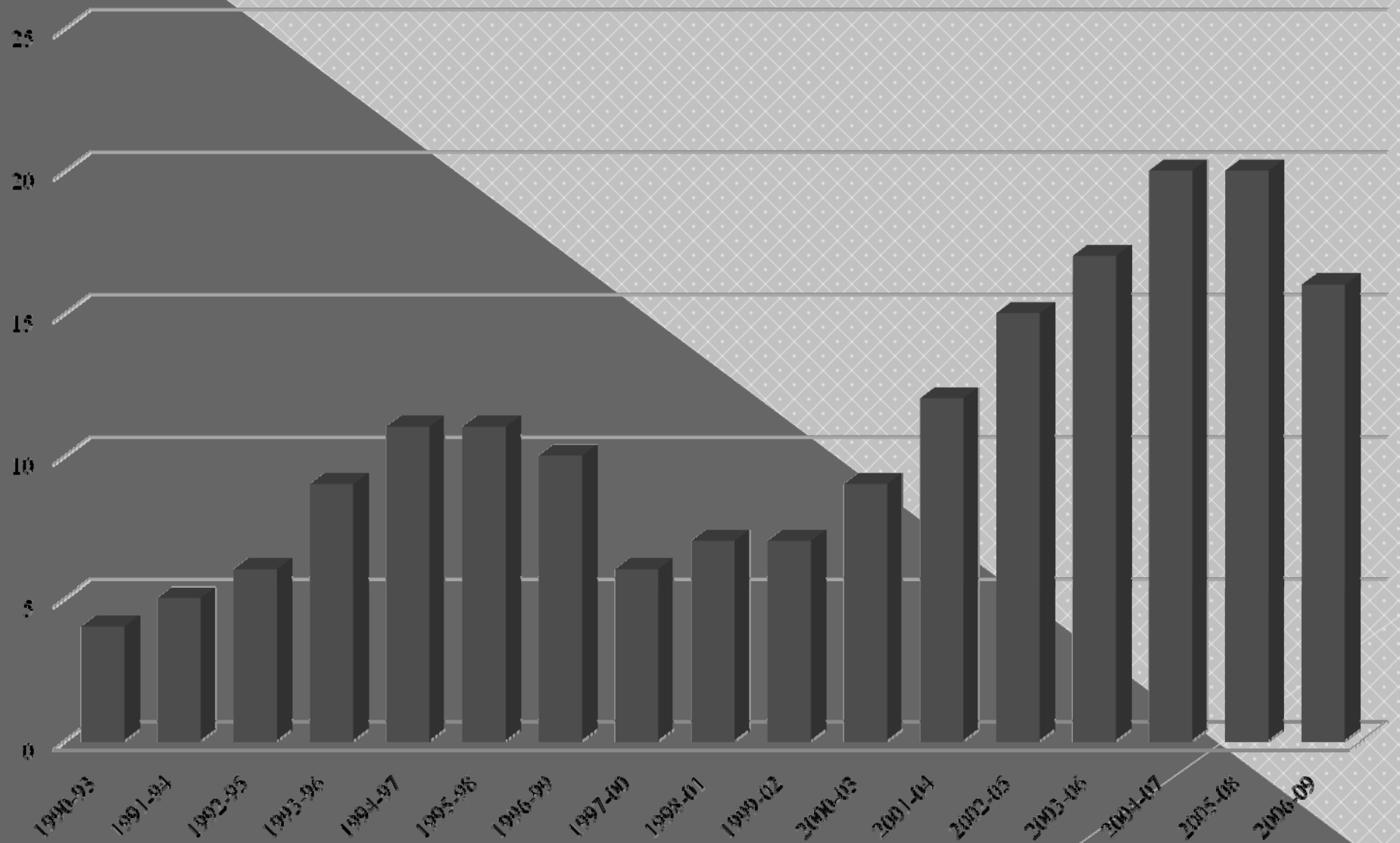
MAJOR INFRACTIONS – ALL Division I Institutions & Division I Bylaws APR Methodology 4-Year Chart





MAJOR INFRACTIONS – ACADEMICALLY RELATED

Division I Institutions & Division I Bylaws
APR Methodology 4-Year Chart





It's important – Now What?

- ❑ Creation of Academic Risk Assessment Task Force Committee
 - Committee Members:
 - Maria Peden, University of Houston
 - Joe Luckey, University of Memphis
 - Sue Bierman, Southern Methodist University
 - Melissa Dawson, The University of Tulsa
 - Danez Marrable, University of Alabama at Birmingham
 - Heather Smith, University of Texas at El Paso
 - Robert Philippi, Conference USA
- ❑ Development of Risk Assessment Tool



Review of Risk Assessment Tool

□ Key Components

- Administration of the Tool
- Assessment Tool Instructions
- Assessment Tool Priority Areas of Review
- Report – Effectiveness Profile
- Best Practices Key



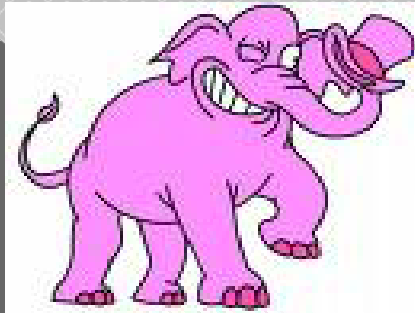
Discussion & Feedback

- Strengths

- Opportunities for Improvement

Questions?

Thanks for your participation!



Contact Information:

Callie Hubbell

(214) 774 - 1345

chubbell@c-usa.org